



AUDREY HOUSE

16-20 ELY PLACE, EC1
FARRINGDON

*Discreetly
Distinguished*

Schedule of areas

Floor	Sq ft	Sq m	Terrace (Sq ft / sq m)	Status
Upper ground	1,234	115	265 / 24.6	Fully fitted
Garden	6,067	564	278 / 25.9	CAT A
Lower ground	2,713	252	271 / 25.2	CAT A
Total	10,014	931	814 / 75.7	

Amenities



New A/C



LED lighting



EPC



Showers



Commissionaire



Terraces



Bike store

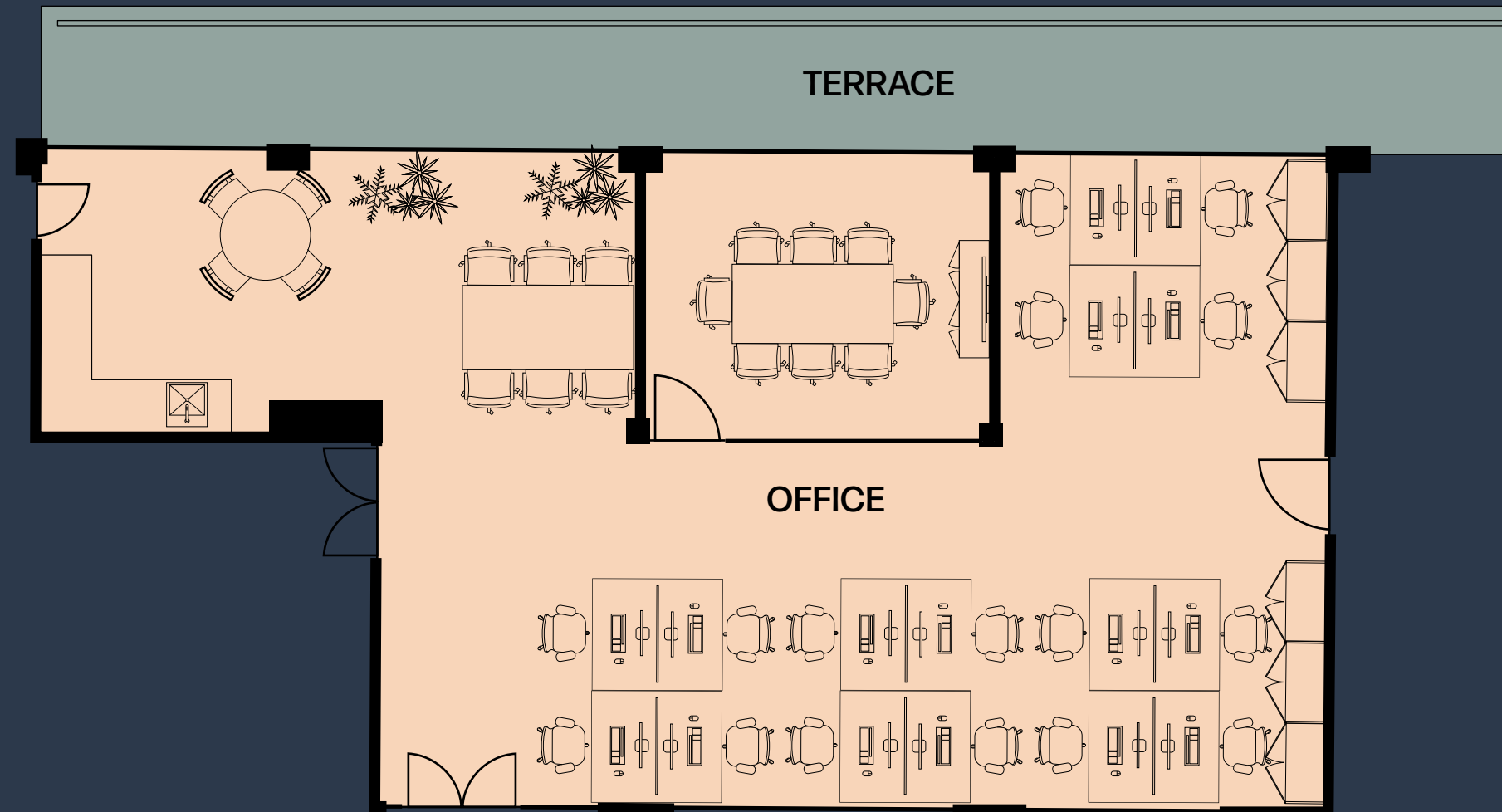


24/7 Access &
security



Upper ground floor

Fully fitted | 1,234 Sq ft | 115 Sq m



- Office
- Terrace

1 8 Person meeting room

16 Desks

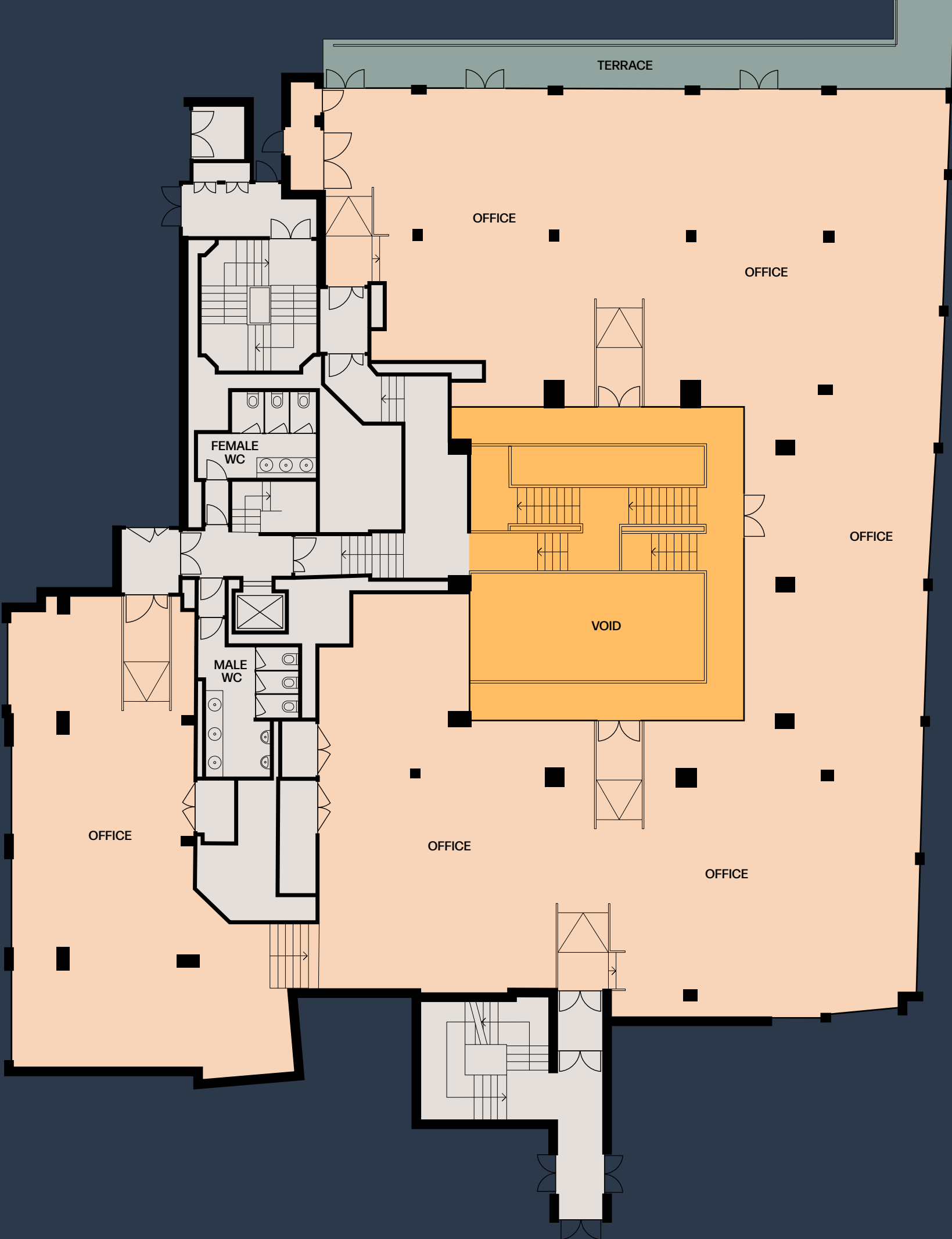
6 Hot desks

1 Kitchenette / breakout area



Garden floor

CAT A | 6,067 Sq ft | 564 Sq m



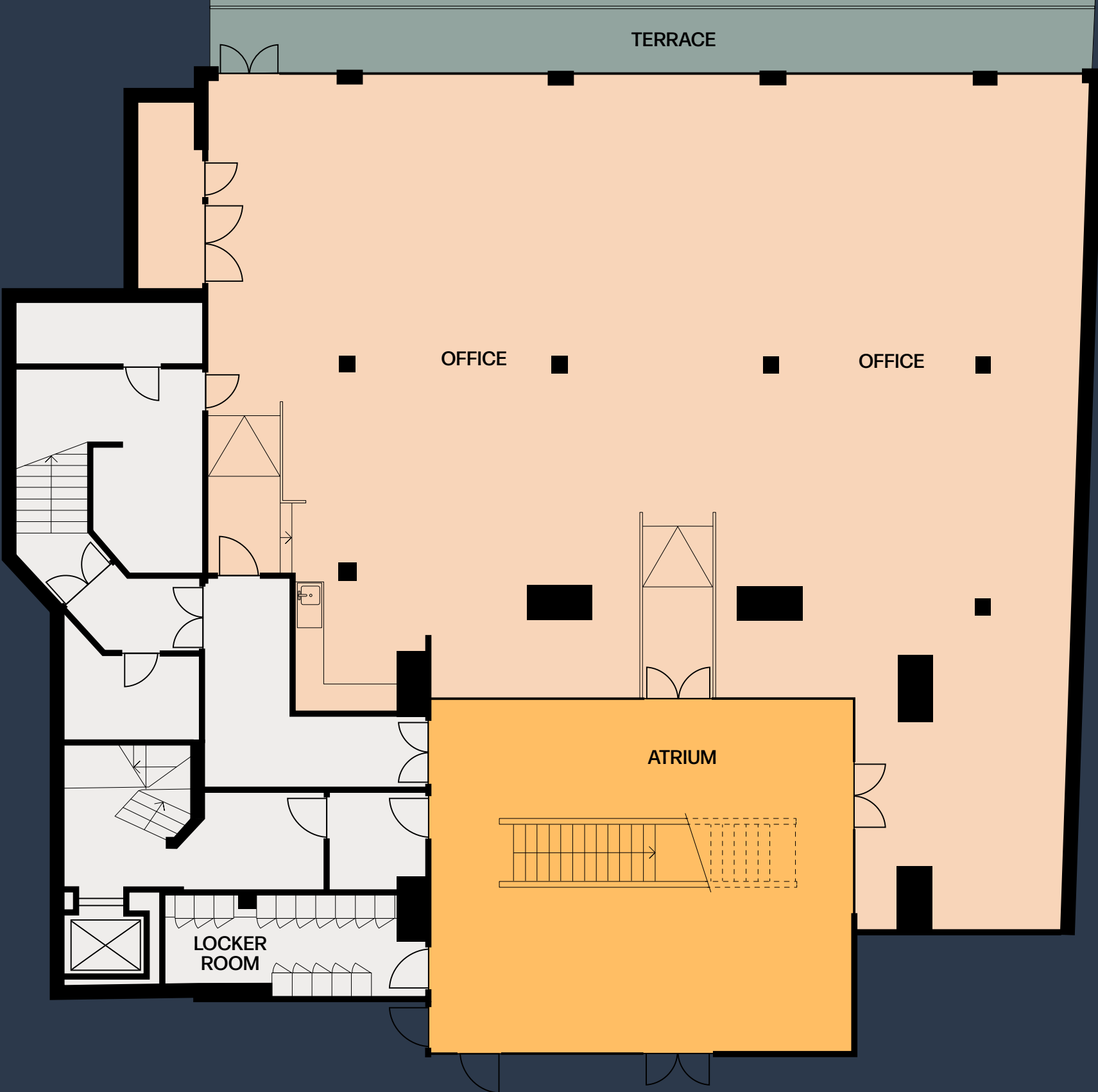
- Office
- Atrium
- Terrace
- Core





Lower ground floor

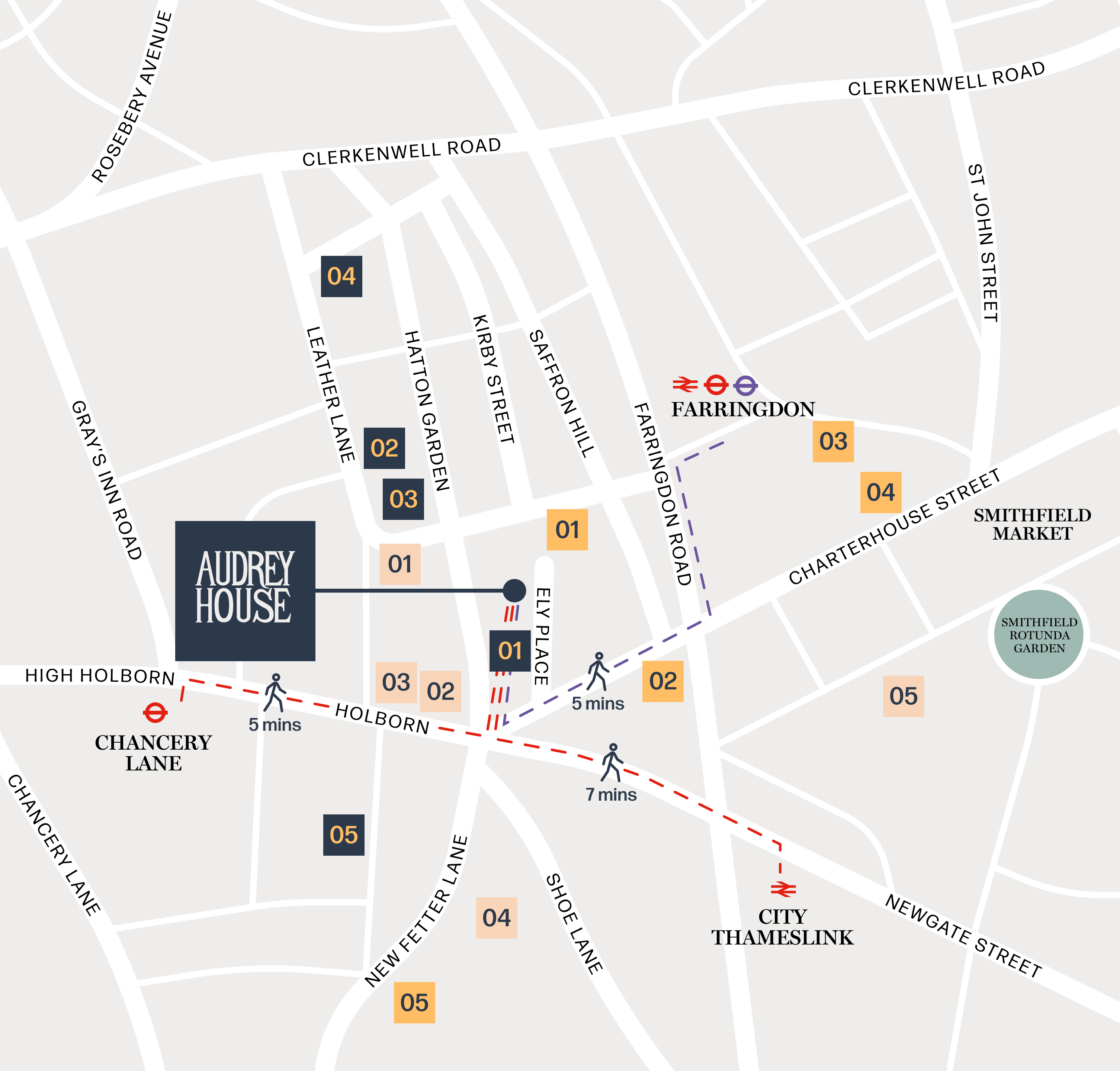
CAT A | 2,713 Sq ft | 252 Sq m



- Office
- Atrium
- Terrace
- Core







Perfectly placed to enjoy the area.

Pubs, Bars & Cafe's

- 01. Ye Olde Mitre
- 02. Tongue & Brisket
- 03. The Artifacts Coffee & Culture
- 04. The Craft beer Co.
- 05. WatchHouse

Restaurants

- 01. Bleeding Heart Yard
- 02. Vivat Bacchus
- 03. Bouchon Racine
- 04. Smiths of Smithfield
- 05. Natural Kitchen

Amenities

- 01. Gymbox
- 02. Bounce Farringdon
- 03. Sainsbury's
- 04. The Gym Group
- 05. Urban Golf



Get in touch:

**fisher
german**

Ben Stanley

07974 529675

ben.stanley@fishergerman.co.uk

Liam Carvalho

07884 414418

liam.carvalho@fishergerman.co.uk

Lily Whitehead

07816 264610

lily.whitehead@fishergerman.co.uk

 **Monmouth
Dean**

Jason Hanley

07904 630 154

jhanley@monmouthdean.com

Jack Barton

07424 224 213

jbarton@monmouthdean.com

Misrepresentation Disclaimer

1. Particulars: These particulars are not an offer or contract, nor part of one. You should not rely on statements by Fisher German and Monmouth Dean in the particulars or by word of mouth or in writing ("information") as being factually accurate about the property, its condition or its value. Neither Fisher German and Monmouth Dean nor any joint agent has any authority to make any representations about the property, and accordingly any information given is entirely without responsibility on the part of the agents, seller(s) or lessor(s). 2. Photos/GCI's etc: The photos/GCI's show only certain parts of the property as they appeared at the time they were taken. Areas, measurements and distances given are approximate only. 3. Regulations etc: Any reference to alterations to, or use of, any part of the property does not mean that any necessary planning, building regulations or other consent has been obtained. A buyer or lessee must find out by inspection or in other ways that these matters have been properly dealt with and that all information is correct. 4. VAT: The VAT position relating to the property may change without notice. Designed by Smart Soho. November 2025.